

HID ignitors for series systems

SN 57 220-240V 50/60Hz

HID ignitors for series systems

Product data

• General Characteristics

| | |
|--------------------------|-----------|
| Rated Number of Lamps | 1 piece |
| Rated Ballast-Lamp Power | 50/70 |
| Rated Lamptype | SON |
| Application code | 57 |
| Line Voltage | 220-240 V |
| Line Frequency | 50/60 Hz |
| Housing | SNI-85 |

• Operating Characteristics

| | |
|--------------------------------|---------------|
| Ignition type | Semi-Parallel |
| Mains voltage safety (AC) | -10%/+10% |
| Mains voltage performance (AC) | -8%/+6% |
| Number of ignition pulses | 2 x |
| Power losses gear | 0.5 W |
| Response voltage | 195 V |
| Ignition Voltage | 2.50 (max) kV |

• Wiring Characteristics

| | |
|-----------------------------|---------------------------|
| Cable-Cap wires device/lamp | 2 nF |
| Connector type | Screw |
| Striplength | 6.0 mm |
| Wcs Ballast contacts | 0.70-2.50 mm ² |

• Temperature Characteristics

| | |
|----------------|------------|
| T-case maximum | 90 (max) C |
|----------------|------------|

| | |
|-----------|-----------------------|
| T-ambient | -20 (min), 75 (max) C |
| T-storage | -25 (min), 80 (max) C |

• Product Dimensions

| | |
|-------------------------|---------|
| Length A1 | 84.5 mm |
| Fixing Hole Distance | 65.0 mm |
| Length A2 | |
| Width B1 | 41.0 mm |
| Height C1 | 38.0 mm |
| Fixing Hole Diameter D1 | 4.3 mm |

• Approval & Application Chars

| | |
|------------------|-----|
| CE marking | Yes |
| ENEC certificate | Yes |

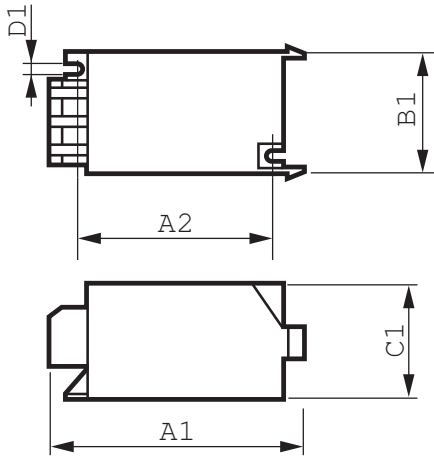
• Product Data

| | |
|-----------------------------|------------------------|
| Order code | 915559 30 |
| Full product code | 871150091555930 |
| Full product name | SN 57 220-240V 50/60Hz |
| Order product name | SN 57 220-240V 50/60Hz |
| Pieces per pack | 1 |
| Packing configuration | 48 |
| Packs per outerbox | 48 |
| Bar code on pack - EAN1 | 8711500915559 |
| Bar code on outerbox - EAN3 | 8711500907547 |
| Logistic code(s) - 12NC | 913619589966 |
| Net weight per piece | 0.050 kg |

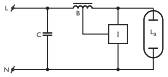
PHILIPS

sense and simplicity

Dimensional drawing



| Product | A1 (Norm) | A2 (Norm) | B1 (Norm) | C1 (Norm) | D1 (Norm) |
|------------------------|-----------|-----------|-----------|-----------|-----------|
| SN 57 220-240V 50/60Hz | 84.5 | 65.0 | 41.0 | 38.0 | 4.3 |



© 2012 Koninklijke Philips Electronics N.V.
All rights reserved.

Specifications are subject to change without notice. Trademarks are the property of Koninklijke Philips Electronics N.V. or their respective owners.

www.philips.com/lighting

2012, February 1
data subject to change