

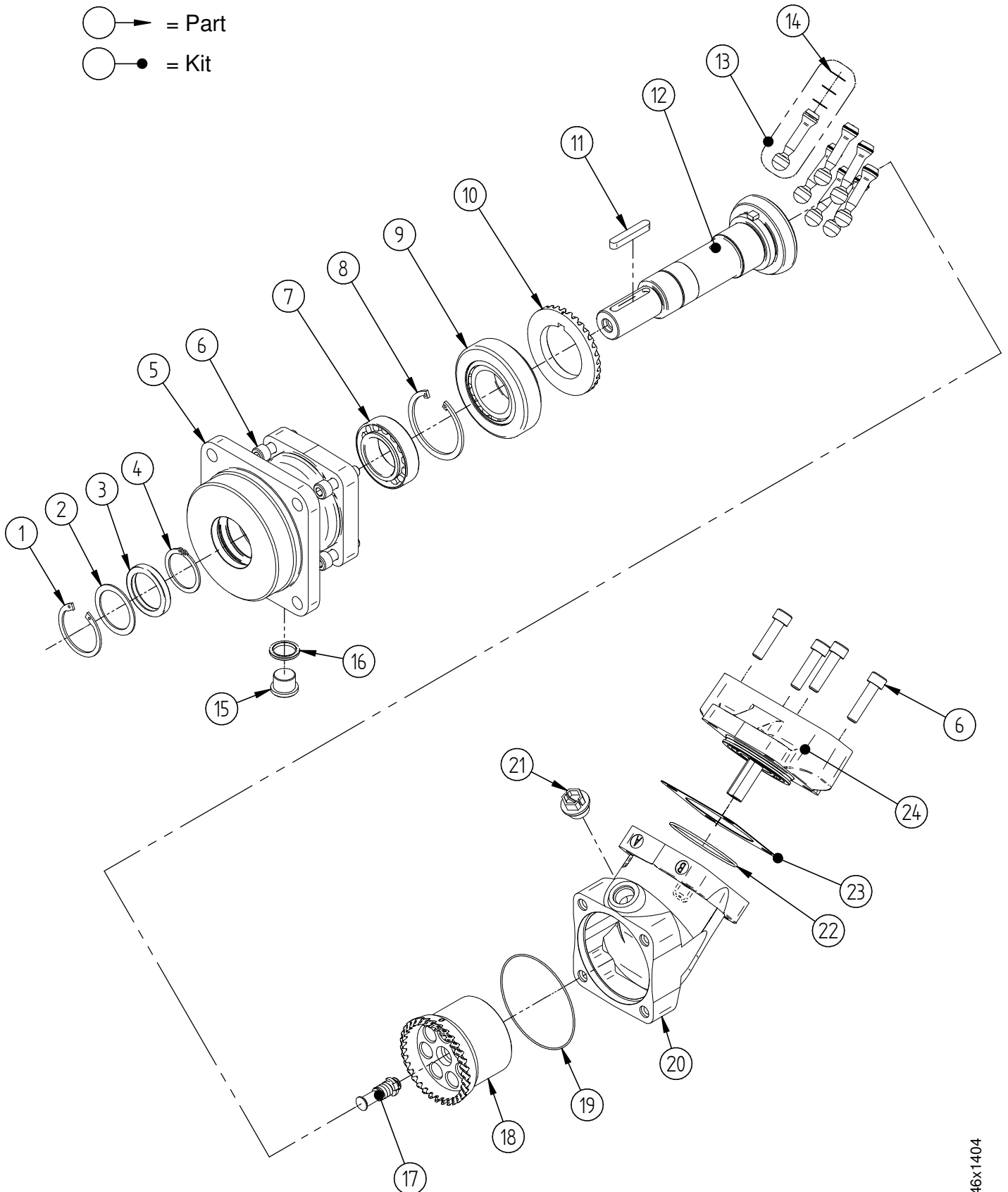




Spare part list MOTOR SCM 010-064 ISO
Valid from Serial No: 547223

-  = Part
-  = Kit



SCM 010 ISO

Item	Part No.	Title	Type*	Qty.
1	91923	Lock ring		1
2	30007	Washer		1
3	91630	Shaft seal	N - Nitrile	1
3	91722	Shaft seal	H - Nitrile, High pressure	1
3	91825	Shaft seal	V - Viton, High temperature	1
4	90780	Lock ring		1
5	30216	Bearing housing	K41 - ISO 4-Hole	1
6	91667	Bolt		8
7	91938	Tapered roller bearing		1
8	90877	Lock ring		1
9	91666	Tapered roller bearing		1
10	20086	Gear ring		1
11	91944	Key	For K20 shaft	1
12	50745	Shaft	W20 - Spline W20x1.25x14x9g	1
12	50746	Shaft	K20 - Key Ø20	1
13	50254	Piston		5
14	30483	Piston rings		15
15	91625	Plug		1
16	90307	Seal washer		1
17	21099	Spring pin		1
18	20754	Cylinder barrel		1
19	91664	O-ring		1
20	30230	Angular housing		1
21	91372	Plug		1
22	91665	O-ring		1
23	20094	Shim		1
24	30492	Connection Cover	S3G	1
24	30480	Connection Cover	K3G	1

*For different types, see data sheet at <http://www.sunfab.com> or contact Sunfab

SCM 012 ISO

Item	Part No.	Title	Type*	Qty.
1	91923	Lock ring		1
2	30007	Washer		1
3	91630	Shaft seal	N - Nitrile	1
3	91722	Shaft seal	H - Nitrile, High pressure	1
3	91825	Shaft seal	V - Viton, High temperature	1
4	90780	Lock ring		1
5	30216	Bearing housing	K1 - ISO 4-Hole	1
6	91667	Bolt		8
7	91938	Tapered roller bearing		1
8	90877	Lock ring		1
9	91666	Tapered roller bearing		1
10	20086	Gear ring		1
11	91944	Key	For K20 shaft	1
11	91945	Key	For K25 shaft	1
12	50745	Shaft	W20 - Spline W20x1.25x14x9g	1
12	50743	Shaft	W25 - Spline W25x1.25x18x9g	1
12	50746	Shaft	K20 - Key Ø20	1
12	50744	Shaft	K25 - Key Ø25	1
13	50279	Piston		5
14	20096	Piston rings		15
15	91625	Plug		1
16	90307	Seal washer		1
17	20337	Spring pin		1
18	20235	Cylinder barrel		1
19	91664	O-ring		1
20	30230	Angular housing		1
21	91372	Plug		1
22	91665	O-ring		1
23	20094	Shim		1
24	30054	Connection Cover	S3U	1
24	30053	Connection Cover	S3G	1
24	30281	Connection Cover	K3G	1

*For different types, see dataheet at <http://www.sunfab.com> or contact Sunfab

SCM 017 ISO

Item	Part No.	Title	Type*	Qty.
1	91923	Lock ring		1
2	30007	Washer		1
3	91630	Shaft seal	N - Nitrile	1
3	91722	Shaft seal	H - Nitrile, High pressure	1
3	91825	Shaft seal	V - Viton, High temperature	1
4	90780	Lock ring		1
5	30216	Bearing housing	I41 - ISO 4-Hole	1
6	91667	Bolt		8
7	91938	Tapered roller bearing		1
8	90877	Lock ring		1
9	91666	Tapered roller bearing		1
10	20086	Gear ring		1
11	91944	Key	For K20 shaft	1
11	91945	Key	For K25 shaft	1
12	50745	Shaft	W20 - Spline W20x1.25x14x9g	1
12	50743	Shaft	W25 - Spline W25x1.25x18x9g	1
12	50746	Shaft	K20 - Key Ø20	1
12	50744	Shaft	K25 - Key Ø25	1
13	50280	Piston		5
14	20095	Piston rings		15
15	91625	Plug		1
16	90307	Seal washer		1
17	20337	Spring pin		1
18	20236	Cylinder barrel		1
19	91664	O-ring		1
20	30230	Angular housing		1
21	91372	Plug		1
22	91665	O-ring		1
23	20094	Shim		1
24	30056	Connection Cover	S3U	1
24	30055	Connection Cover	S3G	1
24	30283	Connection Cover	K3G	1

*For different types, see dataheet at <http://www.sunfab.com> or contact Sunfab

SCM 025 ISO

Item	Part No.	Title	Type*	Qty.
1	91923	Lock ring		1
2	30007	Washer		1
3	91630	Shaft seal	N - Nitrile	1
3	91722	Shaft seal	H - Nitrile, High pressure	1
3	91825	Shaft seal	V - Viton, High temperature	1
4	90780	Lock ring		1
5	30217	Bearing housing	I42 - ISO 4-Hole	1
6	91667	Bolt		8
7	91938	Tapered roller bearing		1
8	90877	Lock ring		1
9	91666	Tapered roller bearing		1
10	20086	Gear ring		1
11	91946	Key	For K25 & K30 shaft	1
12	50749	Shaft	W25 - Spline W25x1.25x18x9g	1
12	50747	Shaft	W30 - Spline W30x2x14x9g	1
12	50750	Shaft	K25 - Key Ø25	1
12	50748	Shaft	K30 - Key Ø30	1
13	50279	Piston		7
14	20096	Piston rings		21
15	91625	Plug		1
16	90307	Seal washer		1
17	20326	Spring pin		1
18	20084	Cylinder barrel		1
19	91664	O-ring		1
20	30230	Angular housing		1
21	91372	Plug		1
22	91665	O-ring		1
23	20094	Shim		1
24	30058	Connection Cover	S3U	1
24	30057	Connection Cover	S3G	1
24	30286	Connection Cover	K3G	1
24	30445	Connection Cover	V2M	1
24	30108	Connection Cover	R1M	1

*For different types, see data sheet at <http://www.sunfab.com> or contact Sunfab

SCM 034 ISO

Item	Part No.	Title	Type*	Qty.
1	91923	Lock ring		1
2	30007	Washer		1
3	91630	Shaft seal	N - Nitrile	1
3	91722	Shaft seal	H - Nitrile, High pressure	1
3	91825	Shaft seal	V - Viton, High temperature	1
4	90780	Lock ring		1
5	30217	Bearing housing	I42 - ISO 4-Hole	1
6	91667	Bolt		8
7	91938	Tapered roller bearing		1
8	90877	Lock ring		1
9	91666	Tapered roller bearing		1
10	20086	Gear ring		1
11	91946	Key	For K25 & K30 shaft	1
12	50749	Shaft	W25 - Spline W25x1.25x18x9g	1
12	50747	Shaft	W30 - Spline W30x2x14x9g	1
12	50750	Shaft	K25 - Key Ø25	1
12	50748	Shaft	K30 - Key Ø30	1
13	50280	Piston		7
14	20095	Piston rings		21
15	91625	Plug		1
16	90307	Seal washer		1
17	20326	Spring pin		1
18	20085	Cylinder barrel		1
19	91664	O-ring		1
20	30230	Angular housing		1
21	91372	Plug		1
22	91665	O-ring		1
23	20094	Shim		1
24	30060	Connection Cover	S3U	1
24	30059	Connection Cover	S3G	1
24	30288	Connection Cover	K3G	1
24	30423	Connection Cover	V2M	1
24	30109	Connection Cover	R1M	1

*For different types, see data sheet at <http://www.sunfab.com> or contact Sunfab

SCM 040 ISO

Item	Part No.	Title	Type*	Qty.
1	91923	Lock ring		1
2	30084	Washer		1
3	92089	Shaft seal	N - Nitrile	1
3	91739	Shaft seal	H - Nitrile, High pressure	1
3	91983	Shaft seal	V - Viton, High temperature	1
4	92052	Lock ring		1
5	30440	Bearing housing	I43 - ISO 4-Hole	1
6	91617	Bolt		8
7	92037	Tapered roller bearing		1
8	91951	Lock ring		1
9	91129	Tapered roller bearing		1
10	20335	Gear ring	Helical gears	1
10	20046	Gear ring	Straight gears	1
11	91949	Key	For K30 shaft	1
11	91947	Key	For K35 shaft	1
12	50755	Shaft	W30 - Spline W30x2x14x9g	1
12	50753	Shaft	W32 - Spline W32x2x14x9g	1
12	50751	Shaft	W35 - Spline W35x2x16x9g	1
12	50754	Shaft	K30 - Key Ø30	1
12	50752	Shaft	K35 - Key Ø35	1
13	50275	Piston		7
14	20095	Piston rings		21
15	91625	Plug		1
16	90307	Seal washer		1
17	20326	Spring pin		1
18	20583	Cylinder barrel	Helical gears	1
18	30146	Cylinder barrel	Straight gears	1
19	91708	O-ring		1
20	30231	Angular housing		1
21	91372	Plug		1
22	91653	O-ring		1
23	20058	Shim		1
24	30459	Connection Cover	S2U	1
24	30122	Connection Cover	S2M	1
24	30111	Connection Cover	V2M	1
24	30114	Connection Cover	R1M	1

*For different types, see data sheet at <http://www.sunfab.com> or contact Sunfab

8346x1404

SCM 047 ISO

Item	Part No.	Title	Type*	Qty.
1	91923	Lock ring		1
2	30084	Washer		1
3	92089	Shaft seal	N - Nitrile	1
3	91739	Shaft seal	H - Nitrile, High pressure	1
3	91983	Shaft seal	V - Viton, High temperature	1
4	92052	Lock ring		1
5	30440	Bearing housing	I43 - ISO 4-Hole	1
6	91617	Bolt		8
7	92037	Tapered roller bearing		1
8	91951	Lock ring		1
9	91129	Tapered roller bearing		1
10	20335	Gear ring	Helical gears	1
10	20046	Gear ring	Straight gears	1
11	91949	Key	For K30 shaft	1
11	91947	Key	For K35 shaft	1
12	50755	Shaft	W30 - Spline W30x2x14x9g	1
12	50753	Shaft	W32 - Spline W32x2x14x9g	1
12	50751	Shaft	W35 - Spline W35x2x16x9g	1
12	50754	Shaft	K30 - Key Ø30	1
12	50752	Shaft	K35 - Key Ø35	1
13	50281	Piston		7
14	20032	Piston rings		21
15	91625	Plug		1
16	90307	Seal washer		1
17	20326	Spring pin		1
18	20331	Cylinder barrel	Helical gears	1
18	20043	Cylinder barrel	Straight gears	1
19	91708	O-ring		1
20	30231	Angular housing		1
21	91372	Plug		1
22	91653	O-ring		1
23	20058	Shim		1
24	30061	Connection Cover	S2U	1
24	30222	Connection Cover	S2M	1
24	30252	Connection Cover	V2M	1
24	30291	Connection Cover	R1M	1

*For different types, see data sheet at <http://www.sunfab.com> or contact Sunfab

8346x1404

SCM 056 ISO

Item	Part No.	Title	Type*	Qty.
1	91923	Lock ring		1
2	30084	Washer		1
3	92089	Shaft seal	N - Nitrile	1
3	91739	Shaft seal	H - Nitrile, High pressure	1
3	91983	Shaft seal	V - Viton, High temperature	1
4	92052	Lock ring		1
5	30440	Bearing housing	I43 - ISO 4-Hole	1
6	91617	Bolt		8
7	92037	Tapered roller bearing		1
8	91951	Lock ring		1
9	91129	Tapered roller bearing		1
10	20335	Gear ring	Helical gears	1
10	20046	Gear ring	Straight gears	1
11	91949	Key	For K30 shaft	1
11	91947	Key	For K35 shaft	1
12	50755	Shaft	W30 - Spline W30x2x14x9g	1
12	50753	Shaft	W32 - Spline W32x2x14x9g	1
12	50751	Shaft	W35 - Spline W35x2x16x9g	1
12	50754	Shaft	K30 - Key Ø30	1
12	50752	Shaft	K35 - Key Ø35	1
13	50289	Piston		7
14	20402	Piston rings		21
15	91625	Plug		1
16	90307	Seal washer		1
17	20326	Spring pin		1
18	20580	Cylinder barrel	Helical gears	1
18	30328	Cylinder barrel	Straight gears	1
19	91708	O-ring		1
20	30231	Angular housing		1
21	91372	Plug		1
22	91653	O-ring		1
23	20058	Shim		1
24	30467	Connection Cover	S2U	1
24	30343	Connection Cover	S2M	1
24	30345	Connection Cover	V2M	1
24	30347	Connection Cover	R1M	1

*For different types, see data sheet at <http://www.sunfab.com> or contact Sunfab

8346x1404

SCM 064 ISO

Item	Part No.	Title	Type*	Qty.
1	91923	Lock ring		1
2	30084	Washer		1
3	92089	Shaft seal	N - Nitrile	1
3	91739	Shaft seal	H - Nitrile, High pressure	1
3	91983	Shaft seal	V - Viton, High temperature	1
4	92052	Lock ring		1
5	30440	Bearing housing	I43 - ISO 4-Hole	1
6	91617	Bolt		8
7	92037	Tapered roller bearing		1
8	91951	Lock ring		1
9	91129	Tapered roller bearing		1
10	20335	Gear ring	Helical gears	1
10	20046	Gear ring	Straight gears	1
11	91949	Key	For K30 shaft	1
11	91947	Key	For K35 shaft	1
12	50755	Shaft	W30 - Spline W30x2x14x9g	1
12	50753	Shaft	W32 - Spline W32x2x14x9g	1
12	50751	Shaft	W35 - Spline W35x2x16x9g	1
12	50754	Shaft	K30 - Key Ø30	1
12	50752	Shaft	K35 - Key Ø35	1
13	50282	Piston		7
14	20033	Piston rings		21
15	91625	Plug		1
16	90307	Seal washer		1
17	20326	Spring pin		1
18	20332	Cylinder barrel	Helical gears	1
18	20042	Cylinder barrel	Straight gears	1
19	91708	O-ring		1
20	30231	Angular housing		1
21	91372	Plug		1
22	91653	O-ring		1
23	20058	Shim		1
24	30062	Connection Cover	S2U	1
24	30224	Connection Cover	S2M	1
24	30255	Connection Cover	V2M	1
24	30293	Connection Cover	R1M	1

*For different types, see data sheet at <http://www.sunfab.com> or contact Sunfab

8346x1404

SCM 010-064 ISO Seal Kits

Part No.	Includes Items	Title	Type*
50542	1, 2, 3	Shaft seal kit SCM 010-034 ISO	N - Nitrile
50543	1, 2, 3	Shaft seal kit SCM 010-034 ISO	H - Nitrile, High pressure
50544	1, 2, 3	Shaft seal kit SCM 010-034 ISO	V - Viton, High temperature
50765	1, 2, 3	Shaft seal kit SCM 040-064 ISO	N - Nitrile
50766	1, 2, 3	Shaft seal kit SCM 040-064 ISO	H - Nitrile, High pressure
50767	1, 2, 3	Shaft seal kit SCM 040-064 ISO	V - Viton, High temperature
50547	1, 2, 3, 16, 19, 22, 23	Seal kit SCM 010-034 ISO	N - Nitrile
50548	1, 2, 3, 16, 19, 22, 23	Seal kit SCM 010-034 ISO	H - Nitrile, High pressure
50549	1, 2, 3, 16, 19, 22, 23	Seal kit SCM 010-034 ISO	V - Viton, High temperature
50762	1, 2, 3, 16, 19, 22, 23	Seal kit SCM 040-064 ISO	N - Nitrile
50763	1, 2, 3, 16, 19, 22, 23	Seal kit SCM 040-064 ISO	H - Nitrile, High pressure
50764	1, 2, 3, 16, 19, 22, 23	Seal kit SCM 040-064 ISO	V - Viton, High temperature

*For different types, see datacheet at <http://www.sunfab.com> or contact Sunfab