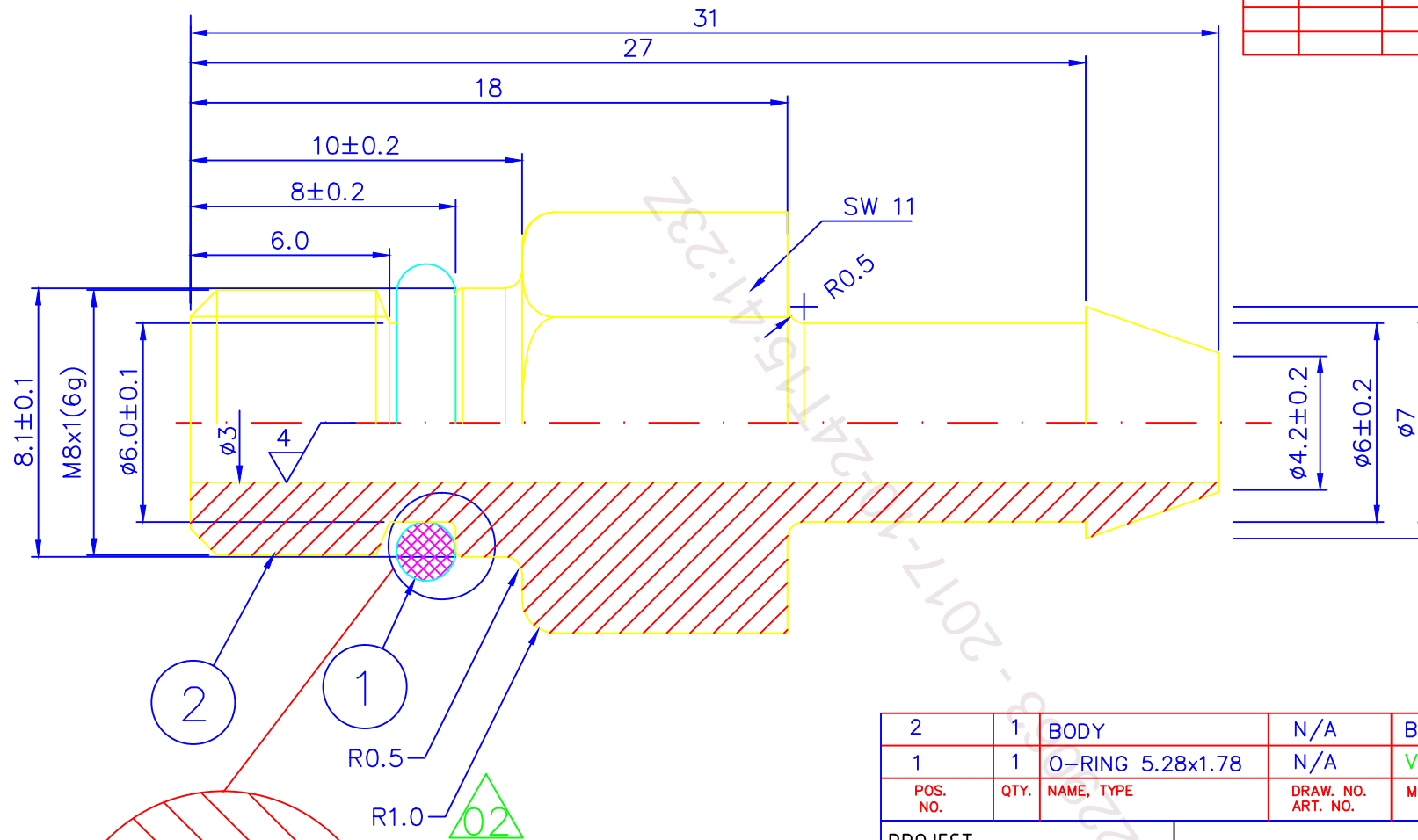


issue	date	change - ch.note no.	draw
01A	06.09.18	Add R,change O-ring material	Hobart
02	061002	TBKA-1471 approved Ch draw	jkv



2	1	BODY	N/A	BRASS	H59
1	1	O-RING 5.28x1.78	N/A	Viton 70°	N/A
POS. NO.	QTY.	NAME, TYPE	DRAW. NO. ART. NO.	MATERIAL	MATR.SPEC.

PROJECT:		TOLERANCE:	SURFACE ROUGHNESS:	PROJ.	SCALE:
		ISO 2768 m	R <sub>a</sub> = 12,5		5:1

	DATE:	Name
DRAW.	02.08.28	JKV
CHECK		
STAND		

Brass fitting  
M8X1

WEMA-SYSTEM A/S BERGEN - NORWAY	DRAWING NO, ART. NO./REF:		ISSUE:
	006145		02
ORIGIN	REPLAC. FOR:	REPLAC. OF:	PAGE: 1

All proprietary rights reserved by WEMA-SYSTEM AS. This drawing is not to be reproduced or in any way utilized for the manufacture of a component or unit herein illustrated, and may not be released to other parties, without written consent by WEMA-SYSTEM AS. Any infringement will be legally pursued. Site of court is Bergen, Norway.