



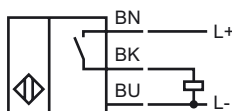
### Model Number

NBN12-18GM50-E2

### Features

- Basic series
- 12 mm not embeddable
- increased operating distance

### Connection

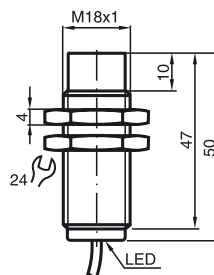


### Accessories

#### BF 18

Mounting flange

## Dimensions



## Technical Data

### General specifications

Switching element function	PNP	Make function
Rated operating distance	$s_n$	12 mm
Installation		not embeddable
Output polarity		DC
Assured operating distance	$s_a$	0 ... 9.72 mm
Reduction factor $r_{AI}$		0.5
Reduction factor $r_{Cu}$		0.4
Reduction factor $r_{V2A}$		0.7

### Nominal ratings

Operating voltage	$U_B$	10 ... 30 V
Switching frequency	$f$	0 ... 200 Hz
Hysteresis	$H$	typ. 5%
Reverse polarity protection		protected against reverse polarity
Short-circuit protection		pulsing
Voltage drop	$U_d$	$\leq 3$ V
Operating current	$I_L$	0 ... 200 mA
No-load supply current	$I_0$	$\leq 10$ mA
Indication of the switching state		all direction LED, yellow

### Functional safety related parameters

MTTF <sub>d</sub>	1570 a
Mission Time ( $T_M$ )	20 a
Diagnostic Coverage (DC)	0 %

### Ambient conditions

Ambient temperature	-25 ... 70 °C (248 ... 343 K)
---------------------	-------------------------------

### Mechanical specifications

Connection type	2 m, PVC cable
Core cross-section	0.34 mm <sup>2</sup>
Housing material	brass, nickel-plated
Sensing face	PBT
Protection degree	IP67

### Compliance with standards and directives

Standard conformity	
Standards	EN 60947-5-2:2007 IEC 60947-5-2:2007