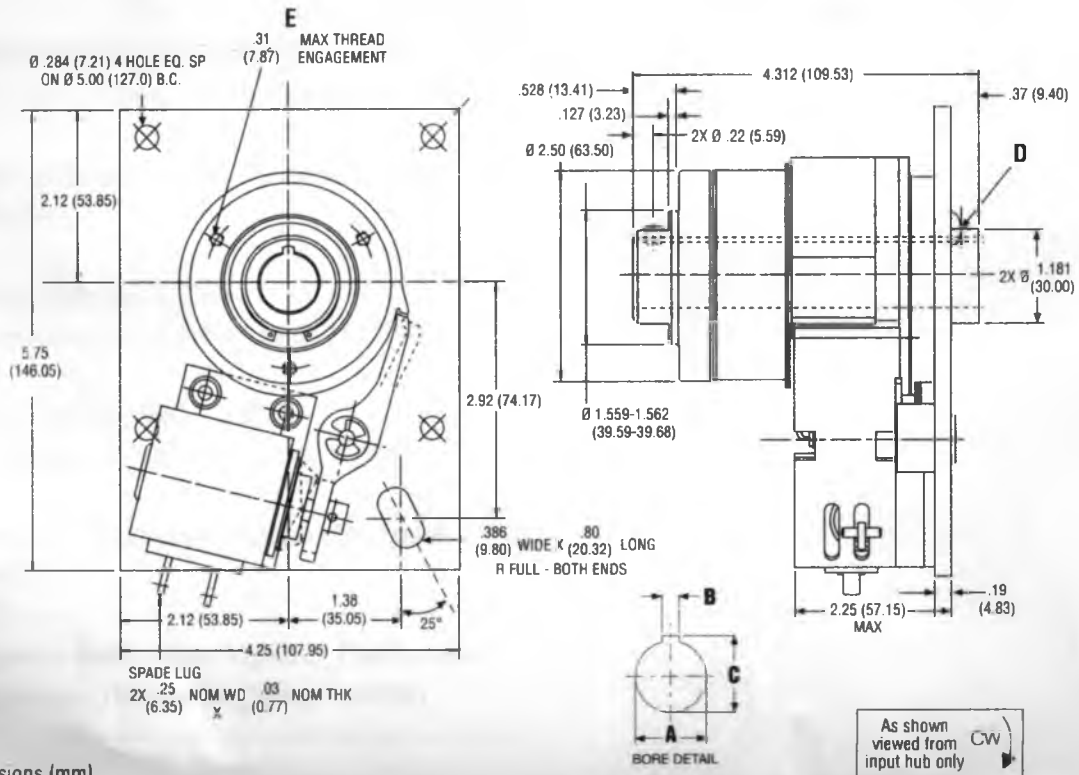




# Super CB-6 Clutch/Brake

## Dimensions & Specifications



Dimensions (mm)  
Mounting requirements see pages 91 & 92.

PERFORMANCE	
Static torque	500 lb-in
Maximum anti-overnun holding capability	300 lb-in
Maximum anti-back holding capability	300 lb-in
Inertia, rotating parts	1,718 lb-in <sup>2</sup>
Maximum radial bearing load at maximum speed	63 lbs
Maximum operating speed	500 RPM
Response time, voltage on at full speed	45 MS
Weight	7 lbs.

ELECTRICAL DATA			
Voltage	Current (amps)	Resistance (ohms)	Status
115 AC 60 Hz	0.334*	57.5	Standard
24 DC	0.586	41.0	Standard
12 DC	1.150	10.4	Modification
90 DC	0.151	598.0	Modification

(Coils are rated for continuous duty)

\*115 AC - In rush current 1.1 amps / Holding current 0.2 amps

BORE & KEYWAY DATA				
Bore A	Keyway Width B	Keyway Depth C	Set Screws D	Mounting Holes E
0.7505-0.7525 (19.062-19.114)	0.1885-0.1905 (4.787-4.839)	0.837-0.842 (21.25-21.39)	2x #10-32 UNC-2B x.19 Lg. Hex Skt. Set Screw	3x #1/4-20 UNC-2B 2.062 BC
1.0005-1.0025 (25.412-25.464)	-	-	2x 0.187-0.192 Hole (4.74-4.88)	3x #1/4-20 UNC-2B 2.062 BC
METRIC BORES				
0.7874-0.7894 (20.0 H9)	0.2356-0.2368 (5.985-6.015)	0.8976-0.9015 (22.800-22.900)	2x M5 x 0.8 x 5.0 Lg. Hex Skt. Set Screw	3x M6 x 1.0 holes on 52.38 BC
0.9842-0.9862 (25.0 H9)	-	-	2x 4.87-5.14 Hole (.191-.203)	3x M6 x 1.0 holes on 52.38 BC

## Super CB Series

### Longer Life, Extra Performance Clutch/Brake Packages

Super CB Series combination clutches and brakes accurately start and stop loads driven by a continuously rotating power source. CB units operate from a single AC or DC pulse, stopping the load within  $\pm\frac{1}{2}^\circ$  noncumulative at speeds up to 750 RPM, depending on size. Each unit is pre-engineered and pre-assembled for easy installation.

Super CB clutches and brakes provide 3 to 5 times longer life! The five sizes of Super CB clutch/brake packages offer extraordinary performance and durability for those applications requiring long life under high load, high duty cycle conditions. Thomson will retrofit standard CB-5, CB-6, CB-7, CB-8, CB-10.

#### Features

- Available in 5 sizes
- Cost-effective design
- 3–5 times longer life than Standard CB
- Split cam design sizes CB-5, CB-6, CB-7, CB-8
- Adjustable control collars for easy and accurate output stop position setting
- RoHS compliant

- Load over-travel or back-up is eliminated since Super CB units lock the load in both directions when the solenoid is off
- Anti-overrun feature prevents the output from running faster than the input
- **Roller bearings never need adjustment for wear**
- Bring loads up to speed in 3 milliseconds and stop within 1.5 milliseconds
- AC or DC operated—other voltages available
- See pages 68 and 69 for controls, power supplies
- Direct retrofit for Standard CB-5, CB-6, CB-7, CB-8, CB-10
- 1-, 2- or 4-stop collar with steel insert standard
- Reinforced plastic stop collars also available for up to 24 stop maximum
- Heavy-duty industrial grade coils
- High cycle rate capability
- High torque to size ratio
- Repeatable positioning within  $\pm\frac{1}{2}^\circ$



#### Typical Applications

- Riveters
- Punch presses
- Packaging equipment
- Conveyor drives
- Heavy duty machinery
- Rapid cycling equipment