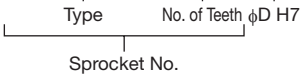


FBN40B

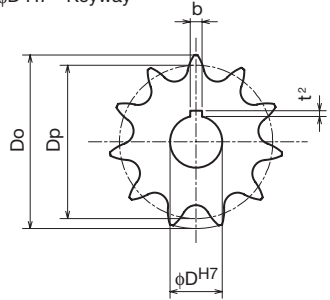
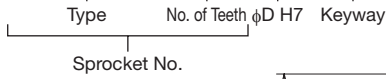
● Order No. Example

FBN 40B 18 D20



● Order No. Example

FBN 40B 12 D10 K4



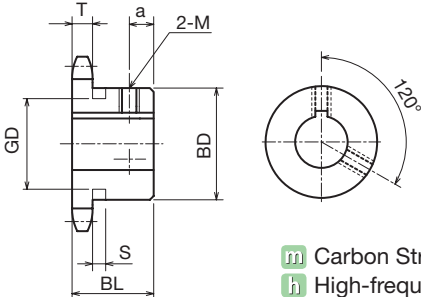
- Chain No.40
- Chain Pitch (P)12.70mm
- Roller Link Inner Width (W) 7.95mm
- Roller Outside Diameter (Dr) 7.92mm
- Tooth Width (T) 7.2 mm

Type	No. of Teeth	Outer Diameter Do	Pitch Diameter Dp	Boss Diameter BD	Boss Length BL	a	Weight kg	φDH7	¥
FBN 40B	9	42	37.13	★28	22	5	0.11	10 12	
	10	46	41.10	★32	22	5	0.14	10 12 14 15	
	11	51	45.08	★36	22	5	0.19	10 12 14 15 16 17	
	12	55	49.07	★40	22	5	0.22	10 12 14 15 16 17 18 19 20	
	13	59	53.07	37	22	6	0.23	12 14 15 16 17 18 19 20	
	14	63	57.07	42	22	6	0.28	12 14 15 16 17 18 19 20	
	15	67	61.08	46	22	6	0.34	12 14 15 16 17 18 19 20	
	16	71	65.10	50	22	6	0.40	14 15 16 17 18 19 20	
	17	76	69.12	54	22	6	0.46	14 15 16 17 18 19 20	
	18	80	73.14	57	22	6	0.51	14 15 16 17 18 19 20	
	19	84	77.16	62	22	6	0.59	14 15 16 17 18 19 20	
	20	88	81.18	67	25	7	0.76	14 15 16 17 18 19 20	
	21	92	85.21	71	25	7	0.85	14 15 16 17 18 19 20 22 24 25 28 30	
	22	96	89.24	75	25	7	0.95	14 15 16 17 18 19 20 22 24 25	
	23	100	93.27	77	25	7	1.00	14 15 16 17 18 19 20 22	
	24	104	97.30	63	25	7	0.84	14 15 16 17 18 19 20 22 24 25	
	25	108	101.33	63	25	7	0.88	14 15 16 17 18 19 20 22 24 25	
	26	112	105.36	63	25	7	0.92	14 15 16 17 18 19 20 22	
	27	116	109.40	63	25	7	0.96	14 15 16 17 18 19 20 22 24 25 28 30	
	28	120	113.43	63	25	7	1.00	14 15 16 17 18 19 20 22 24 25 28 30	
	29	124	117.46	63	25	7	1.00	25	
	30	128	121.50	63	25	7	1.10	14 15 16 17 18 19 20 22 24 25 28 30	
	32	137	129.57	68	28	10	1.30	20 22 24 25 28 30	
	34	145	137.64	68	28	10	1.30	20 22 24 25	
	35	149	141.68	68	28	10	1.40	20 22 24 25 28 30	
	36	153	145.72	68	28	10	1.50	20 22 24 25 28 30	
	37	157	149.75	68	28	10	1.55	35	
	38	161	153.79	68	28	10	1.60	24 25 28 30	
	40	169	161.87	68	28	10	1.70	25 28 30 32 35	
	42	177	169.95	73	32	10	2.05		
45	189	182.06	73	32	10	2.25			
48	201	194.18	73	32	10	2.45			
50	209	202.26	73	32	10	2.60			

FBN Finished Bore Sprocket

D10 K4x1.8 Specification New JIS Keyway Specification

Semi-F Series
FITLINK
Roller
Chains
Chain
Accessories
Idlers &
Tensioners
Sprockets
Oilless
Bushings
Transmission
Accessories
Cover/Chains/
Sprockets
Chain
Couplings
Resin Halls
Triple Speed/Center
Transmission Chains
Timing Belts/
Pulleys/Flanges
Shaft Collars
Pinions/Racks/
Miter Gears
Imperfect
Products



Sprocket No. ϕD^{H7} and Quantity



Sprocket No. D10 K4 and Quantity

Same-day shipping



* Since we also manufacture sizes other than those in the catalog, and machine shaft holes/keys/taps, etc., depending on your request, please contact our company's sales office for details.



* If you order a special shaft diameter specification, please append K4 after the hole diameter.
Example: FBN40B12D10K4

m Carbon Structural Steel
h High-frequency Hardened Teeth

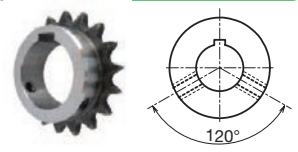
Shaft Hole Machined Specification

ϕD^{H7}	Keyway $b \times t^2$	Set Screw M
10	3 x 1.4	4
12	4 x 1.8	5
14 - 17	5 x 2.3	6
18 - 22	6 x 2.8	6
24 - 30	8 x 3.3	8
32 - 38	10 x 3.3	8
40 - 42	12 x 3.3	8
45	14 x 3.8	10

☆ Special Shaft Hole Machined Specification

ϕD^{H7}	Keyway $b \times t^2$	Set Screw M
10	4 x 1.8	4

* Only the parts can be selected for special shaft hole machining. * Please refer to the above regarding your order method.



I ϕD^{H7} set screws with a \square symbol are set in places other than the keyway (above diagram).

I The sprocket set screws in the table below are different from those above due to the boss type.

No. of Teeth	ϕD^{H7}	Set Screw M
14	25	6
15	30	6

I Sprockets with a \star symbol for BD have a channel in the boss exterior.

No. of Teeth	S	GD
9		23
10	5.2	27
11		31
12	5.2	35

ϕD^{H7}	¥	ϕD^{H7}	¥	ϕD^{H7}	¥	No. of Teeth
14 15						9
16 17 18						10
18 19 20						11
22						12
22 24 25						13
22 24 25 28						14
22 24 25 28 30						15
22 24 25 28 30		32				16
22 24 25 28 30		32 35				17
22 24 25 28 30		32 35 40				18
22 24 25 28 30		32 35 38 40				19
22 24 25 28 30		32 35 38 40 42		45		20
32 35 38 40		42		45		21
28 30 32 35 38		40 42		45		22
24 25 28 30 32 35 38		40 42		45		23
28 30 32 35 38 40		42				24
28 30 32 35 38		40 42				25
24 25 28 30 32 35 38 40		42				26
32 35 38 40		42				27
32 35 38 40		42				28
32 35 38 40		42				29
32 35 38 40		42				30
32 35 40		42				32
28 30 32 35 40		42				34
32 35 40		42				35
32 35 40		42				36
32 35 40		42				37
40		42				38
30 32 35 40		45				40
30 32 35 40		45				42
30 32 35 40		45				45
30 32 35 40		45				48
30 32 35 40		45				50